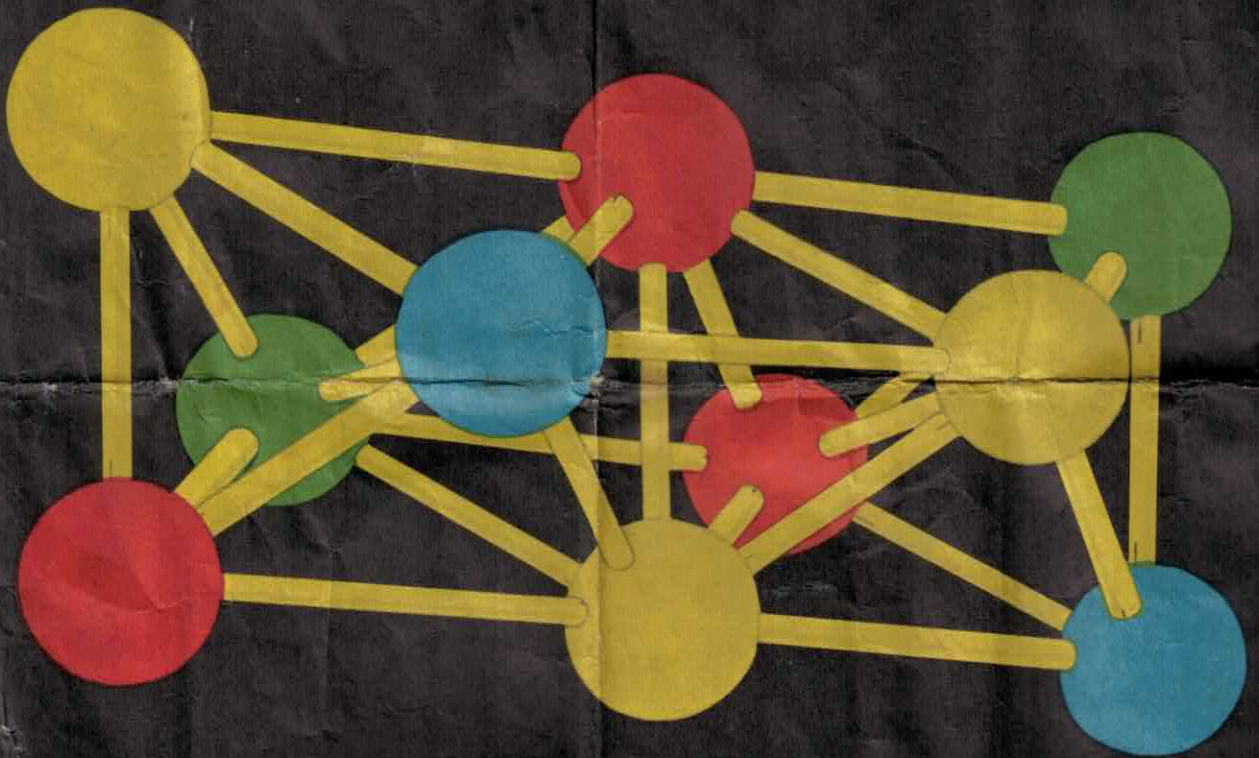
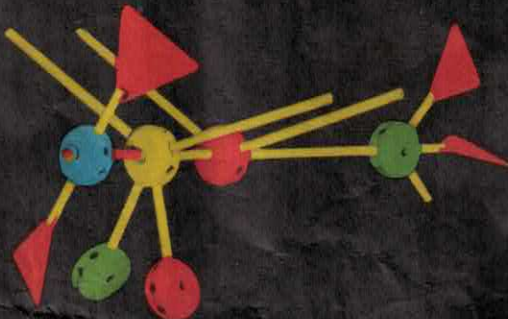


# MAKIT TOY



SYMBOL OF ATOMIC STRUCTURE

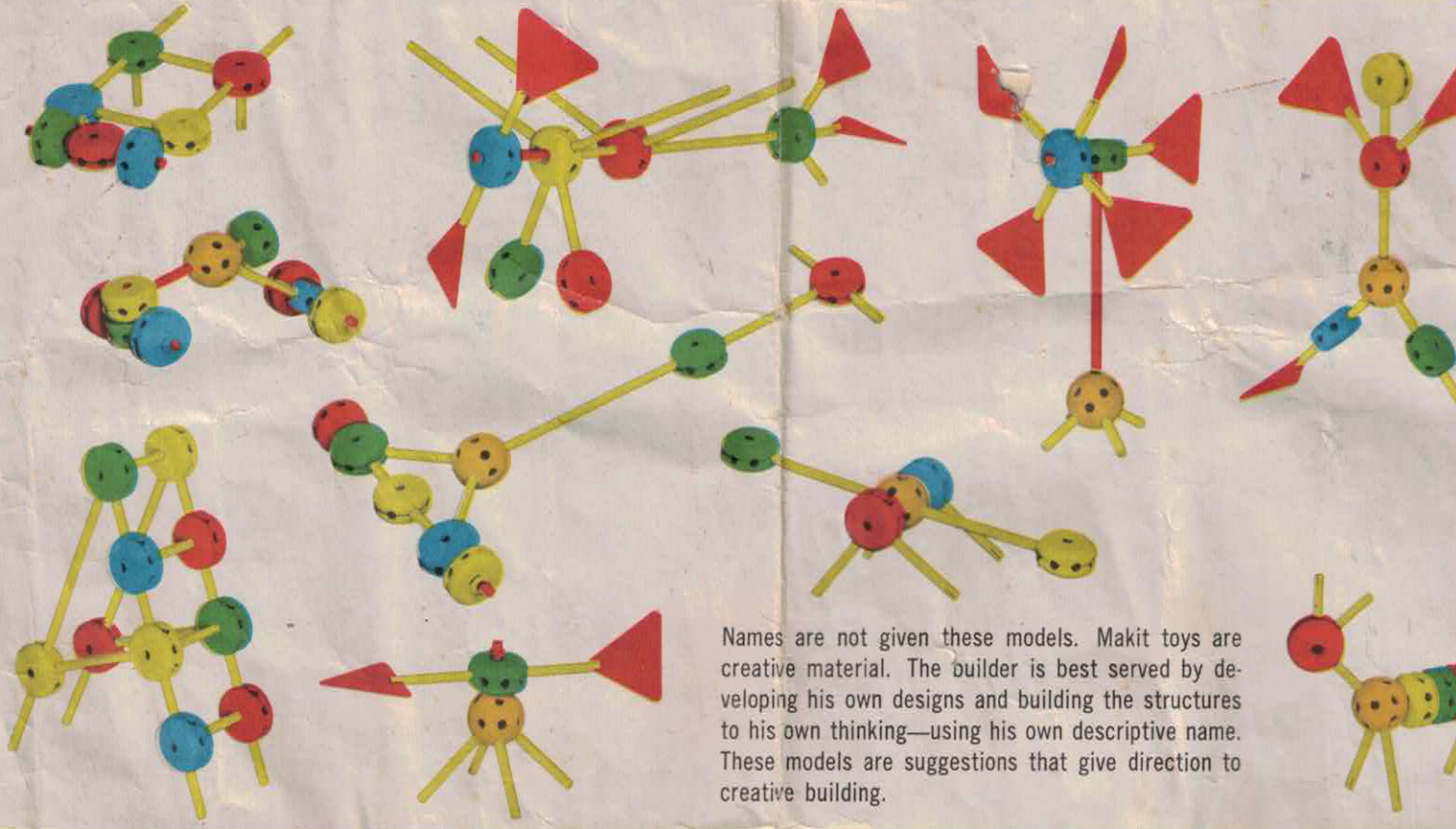
*design suggestions for future engineers and scientists*



Makit toys are made for boys and girls who like to work with their hands—to make things that look real, that run or move like things they see, or that teach by demonstrating the natural laws of science. Makit toys provide the fun and satisfaction that comes from inventive ability. The number of things that can be made is limited only by the imagination of the child and the number of parts with which he has to work. The building of the models on the can or in this folder will suggest many other items to be constructed. Two or more sets of the same content—or sets of different sizes—will combine to make larger models or a greater number of models at one time. Larger Makit toy sets include single and double pulleys, as well as longer rods—for maximum play value.

THESE MODELS AND MANY MORE CAN BE BUILT WITH MAKIT SETS 075, 100, 150, 200, 300 AND 500.

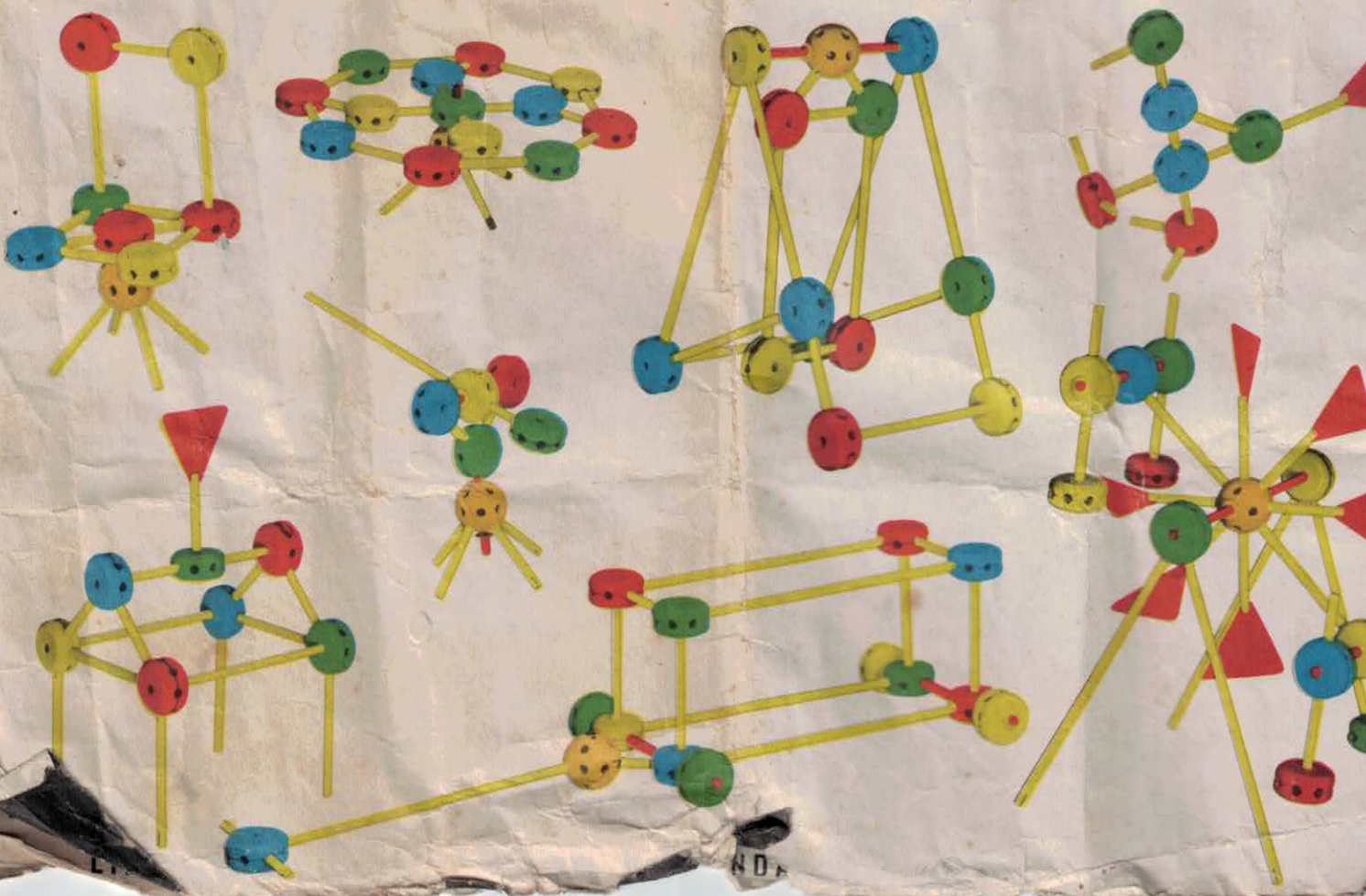
The holes in a Makit ball form 6 circles of 4 holes, 4 circles of 6 holes and 3 circles of 8 holes. The ball allows a variety of angular construction.



Names are not given these models. Makit toys are creative material. The builder is best served by developing his own designs and building the structures to his own thinking—using his own descriptive name. These models are suggestions that give direction to creative building.

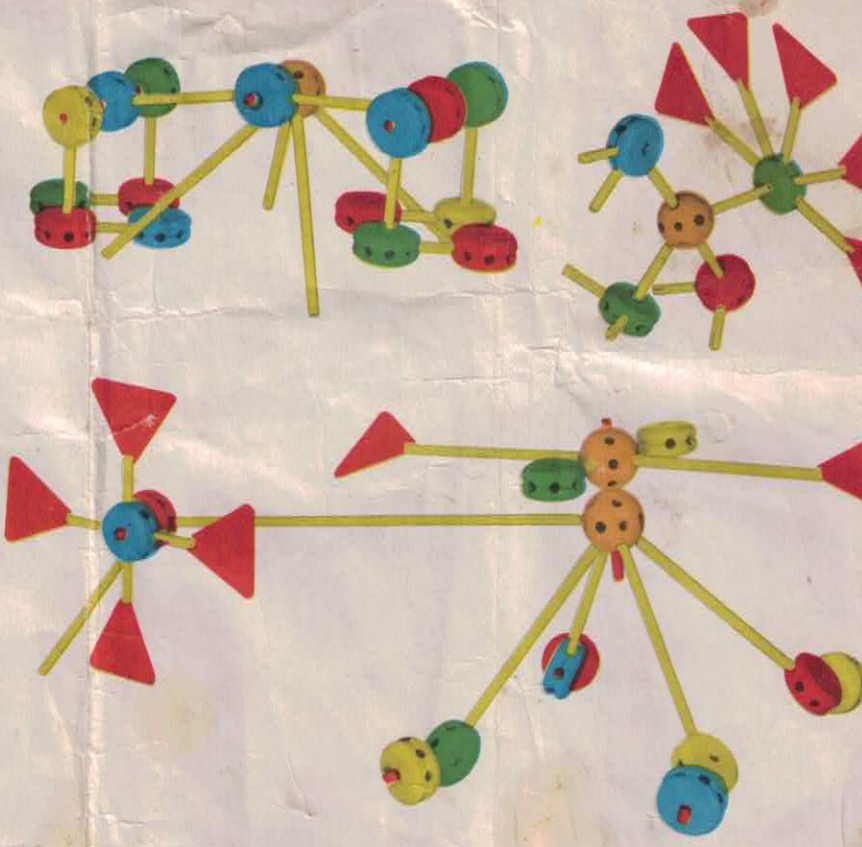
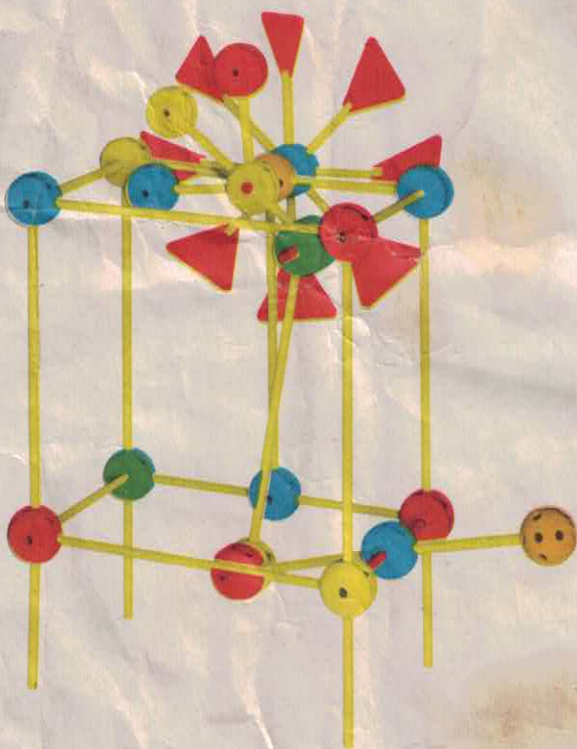
THESE MODELS AND MANY MORE CAN BE BUILT WITH MAKIT SETS 100, 150, 200, 300 AND 500.

A string or rubber band can be used as a belt to transfer power or motion from one turning part to another.



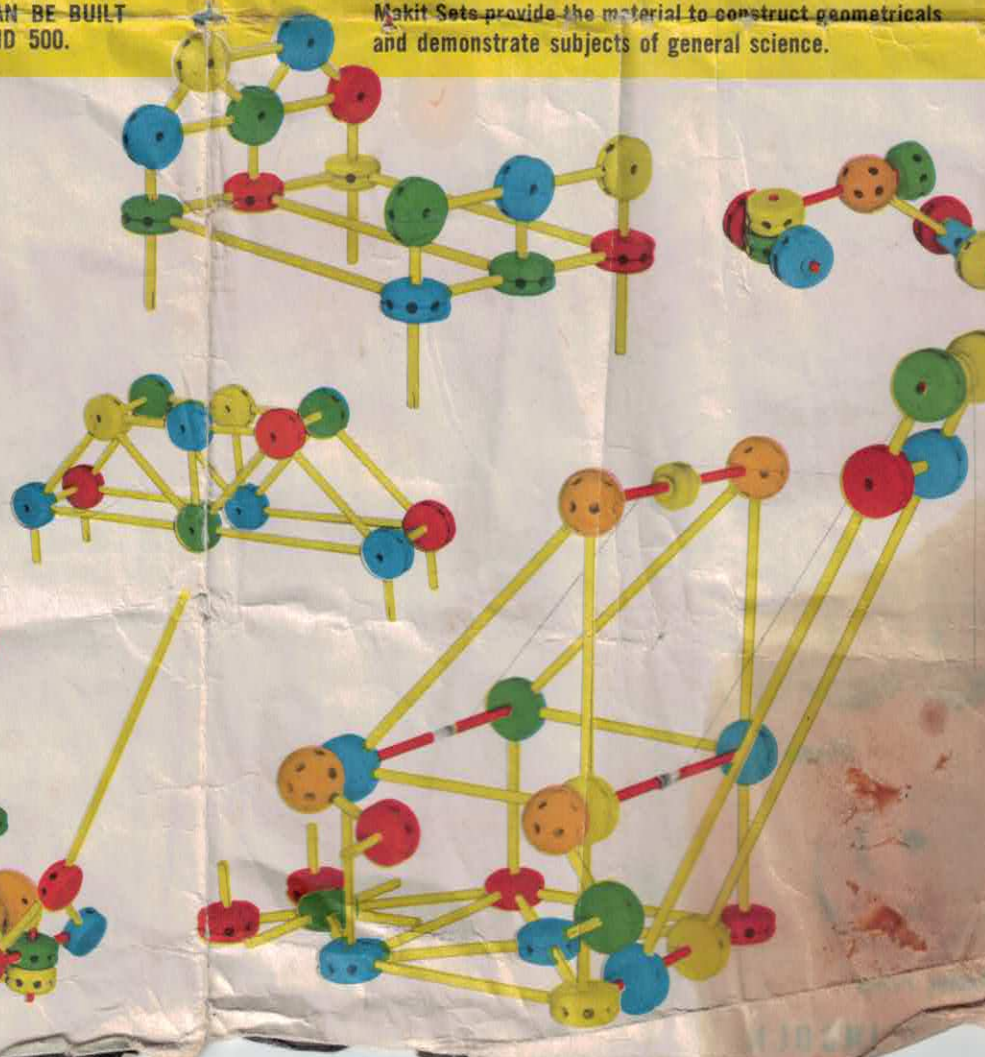
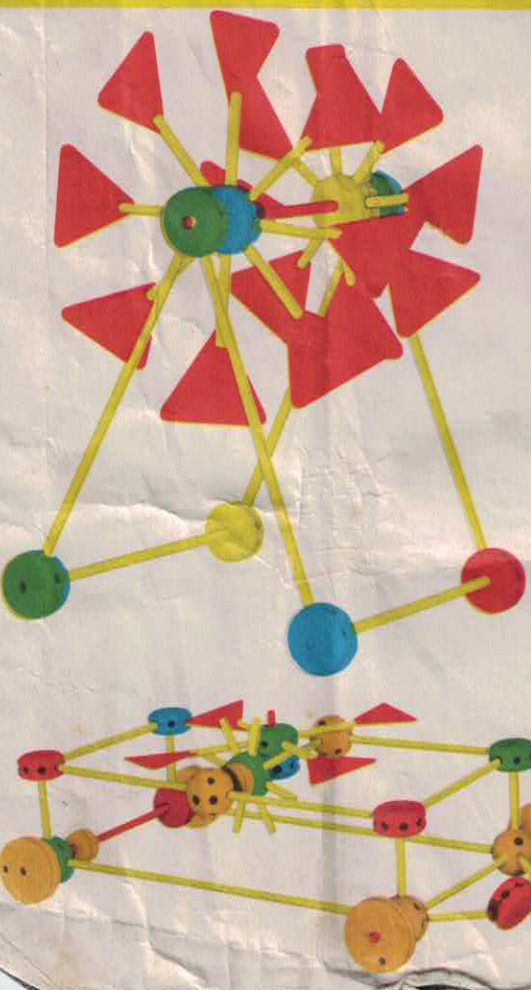
THESE MODELS AND MANY MORE CAN BE BUILT  
WITH MAKIT SETS 150, 200, 300 AND 500.

Windmill blades fit into slots in the ends of plain rods.  
Windmill blades can also be used as flags or as feet for  
animal models.



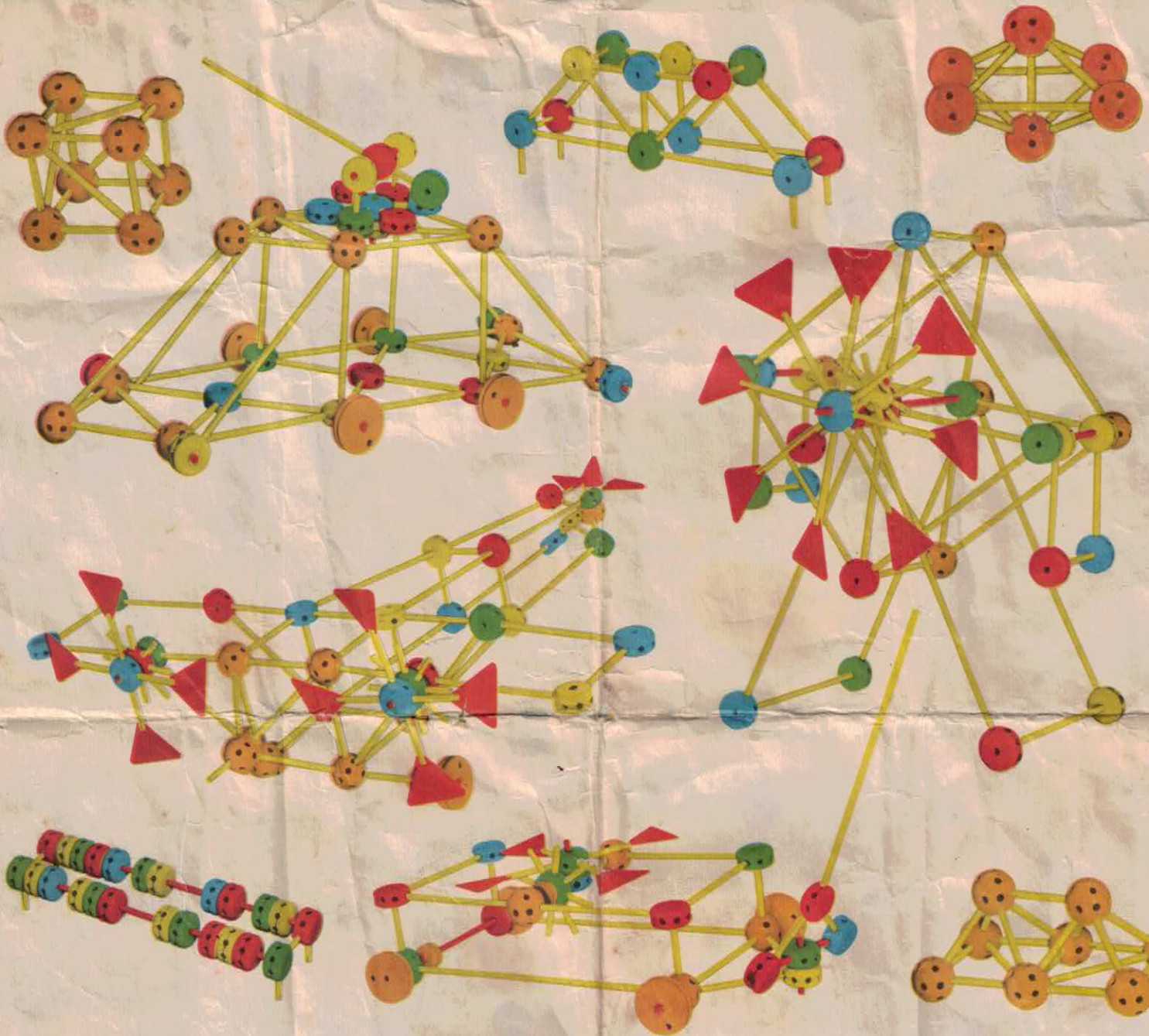
THESE MODELS AND MANY MORE CAN BE BUILT  
WITH MAKIT SETS 200, 300 AND 500.

Makit Sets provide the material to construct geometrical  
and demonstrate subjects of general science.



THESE MODELS AND MANY MORE CAN BE BUILT WITH MAKIT SETS 300 AND 500.

Makit toys teach sources of power (windmill, crank or windlass, traction, gravity). Makit sets demonstrate atomic structures.



FOR THE OLDER FUTURE SCIENTISTS BUILDING WITH MAKIT SETS: PLANETARY GEARING IS A METHOD BY WHICH THE ROTARY SPEED OF A MACHINE CAN BE INCREASED OR DECREASED. PULLEY COMBINATIONS WILL ALSO BE USED FOR INCREASING OR DECREASING SPEEDS. MATERIALS IN MAKIT SET 300 WILL PROVE THESE PRINCIPLES AFTER AN UNDERSTANDING OF PHYSICS.



Wheels

Ball

Single Pulley

Collar

Bushing

Double Pulley

Blade

Red Rod, loose fit—varied lengths

Plain Rod, tight fit—varied lengths

The primary parts of **MAKIT TOY** are rods and turnings. **MAKIT TOYS** have colored **WHEELS** and **BALLS**. The larger sets have **PULLEYS** also. The rods fit into the holes of the turnings. **PLAIN RODS** give a tight or rigid fit. **RED RODS** give a loose movable fit and are used as axles. Rods are proportioned that two rods of one length and one rod of the next longer length will form a right triangle. A combination of **SHORT RODS** with connecting **WHEELS** or **BALLS** is the same length as longer rods.

**METAL BUSHINGS** slip over **RED RODS** to make the rods fit tightly in the **WHEEL** holes. A **WHEEL** can be attached to an axle near the end of the axle, at its center, or anywhere along its length by means of a collar.

**COLLARS AND METAL BUSHINGS** are used to keep **WHEELS** in place on a **RED rod**.