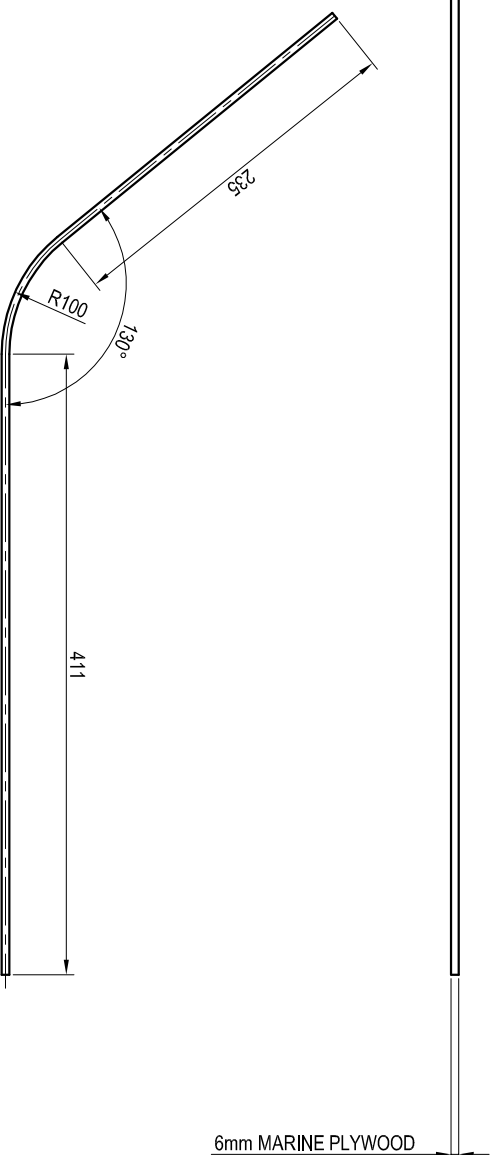
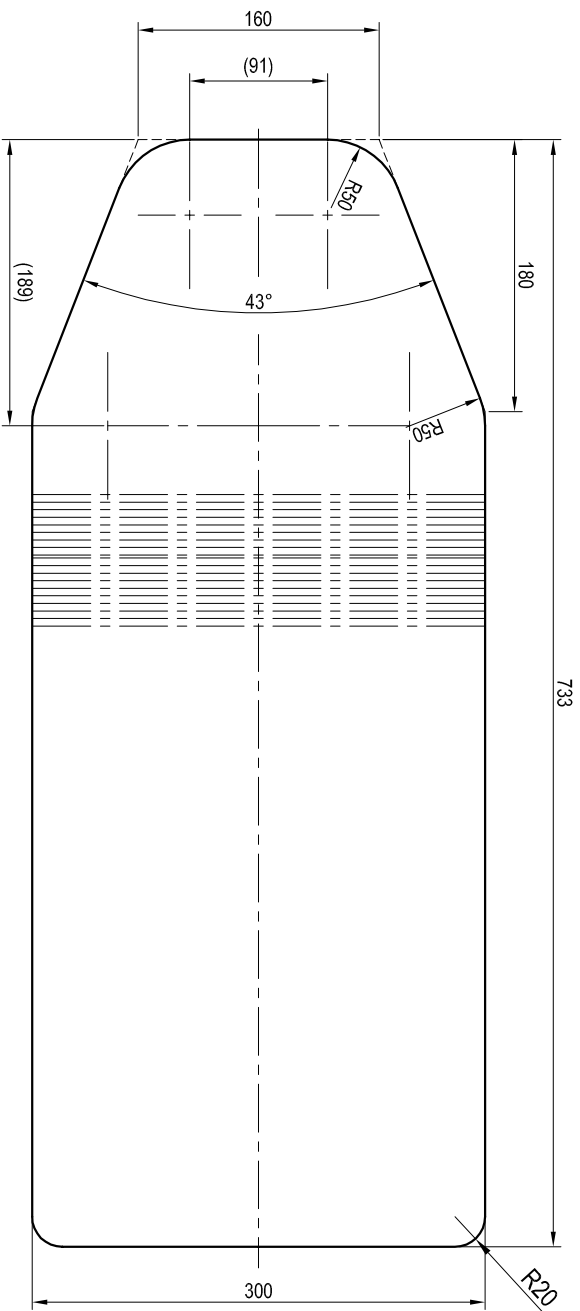
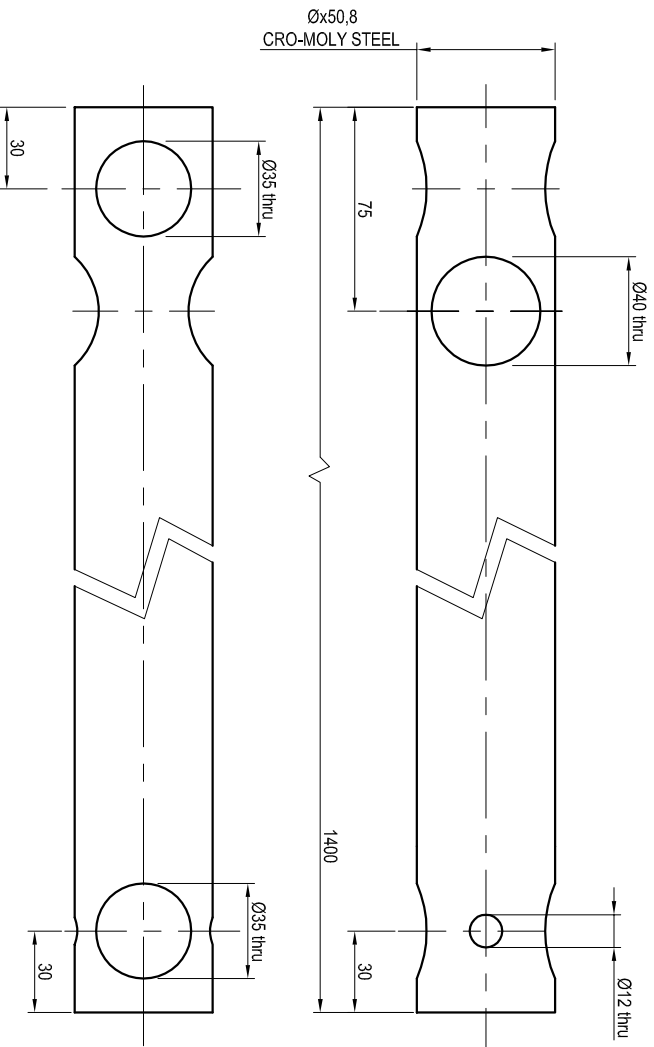


[illegible]

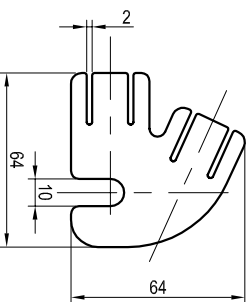


ALL CARE HAS BEEN TAKEN BUT THE DESIGNERS
ACCEPT NO RESPONSIBILITY FOR ANY LOSS OR
INJURY CAUSED BY THIS DESIGN.

[illegible]

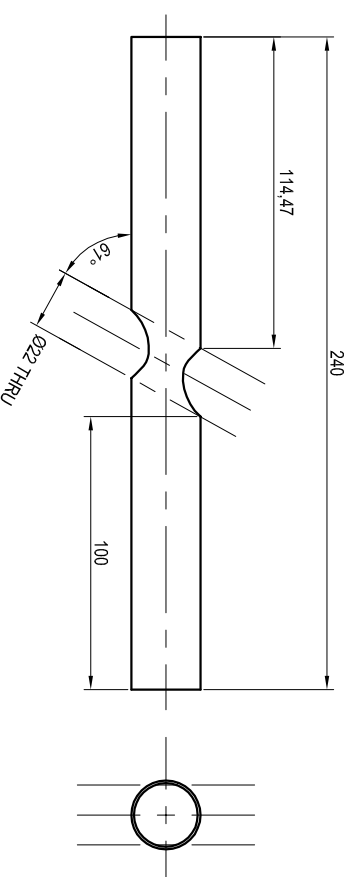


ITEM 1: MAIN FRAME, 1 PER BIKE IN Ø50.8 x 1.2 cro - moly steel

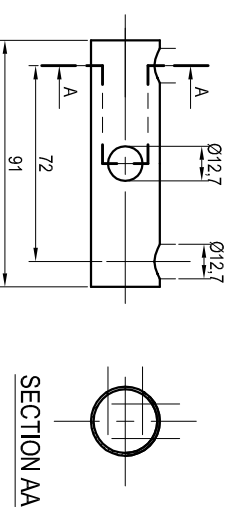


ITEM 5: DROP-OUT, 2 PER BIKE IN 3mm MILD STEEL

ALL CARE HAS BEEN TAKEN BUT THE DESIGNERS
ACCEPT NO RESPONSIBILITY FOR ANY LOSS OR
INJURY CAUSED BY THIS DESIGN.

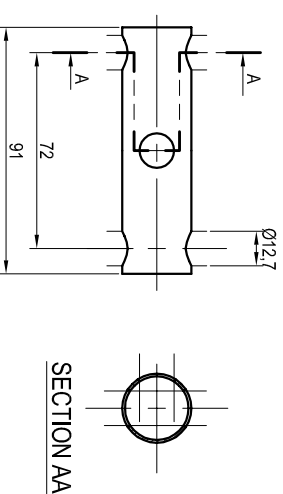


ITEM 2: STEERER TUBE, 1 PER BIKE IN Ø25.4 x 1.2 cro - moly steel



SECTION AA

ITEM 3: REAR FRAME UPPER, 1 PER BIKE IN Ø25.4 x 1.2 cro - moly steel



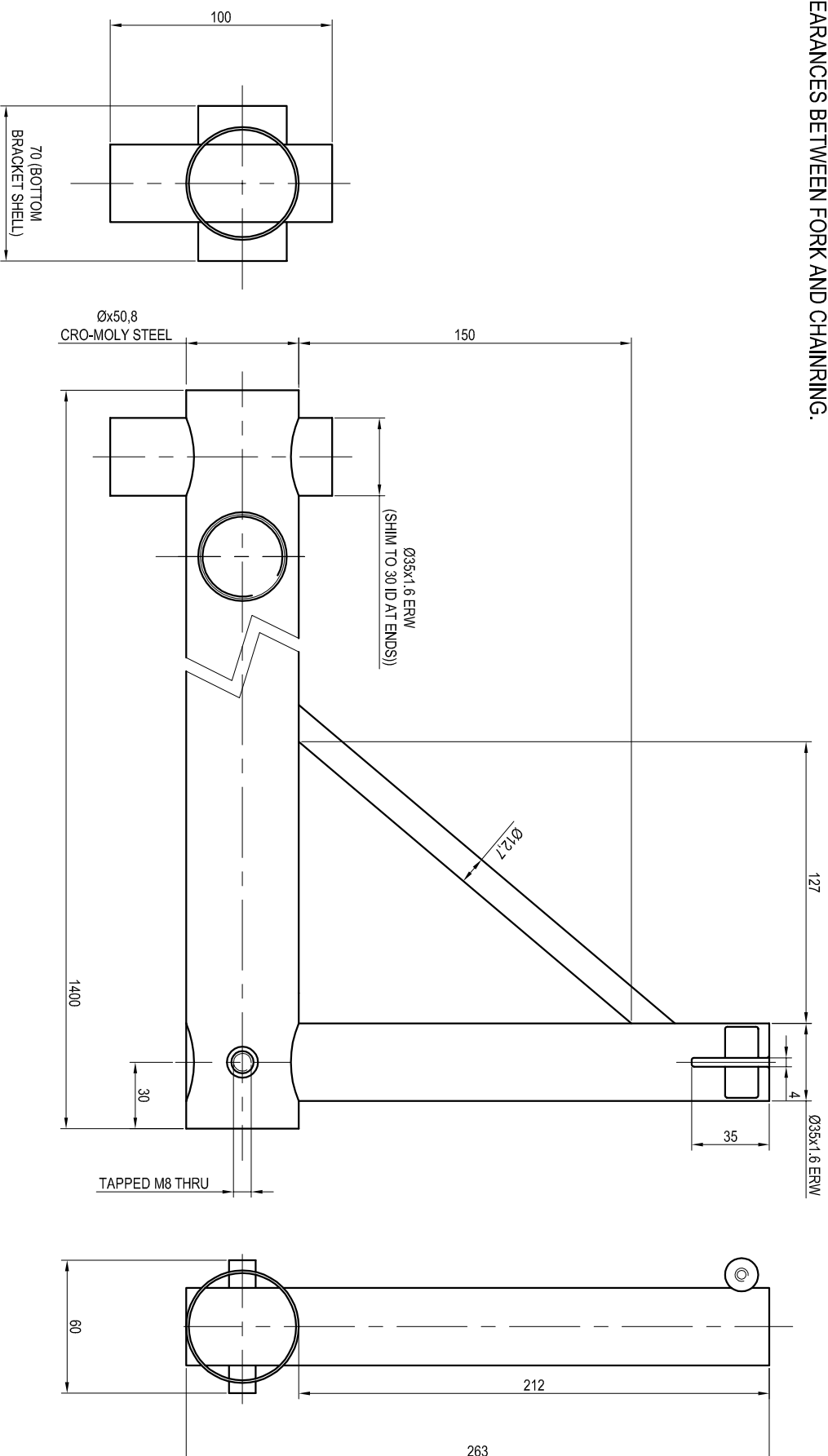
SECTION AA

ITEM 4: REAR FRAME LOWER, 1 PER BIKE IN Ø25.4 x 1.2 cro - moly steel

[illegible][illegible]

ALL CARE HAS BEEN TAKEN BUT THE DESIGNERS
ACCEPT NO RESPONSIBILITY FOR ANY LOSS OR
INJURY CAUSED BY THIS DESIGN.

NOTE: STEERER TUBE LENGTHS NOT DIMENSIONED. THEY ALL DEPEND ON THE TYPE OF FORK WHICH IS CHOSEN AND THE CLEARANCES BETWEEN FORK AND CHAINRING.

[illegible]